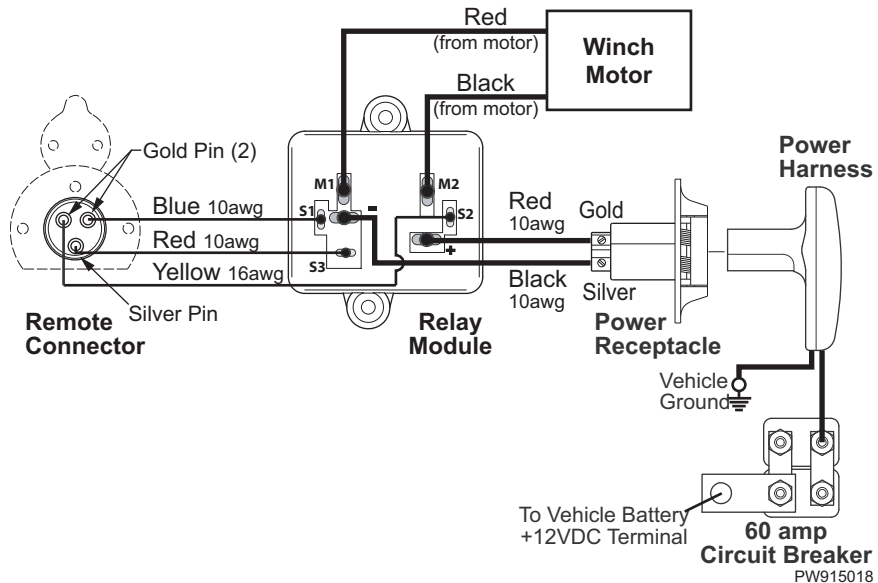
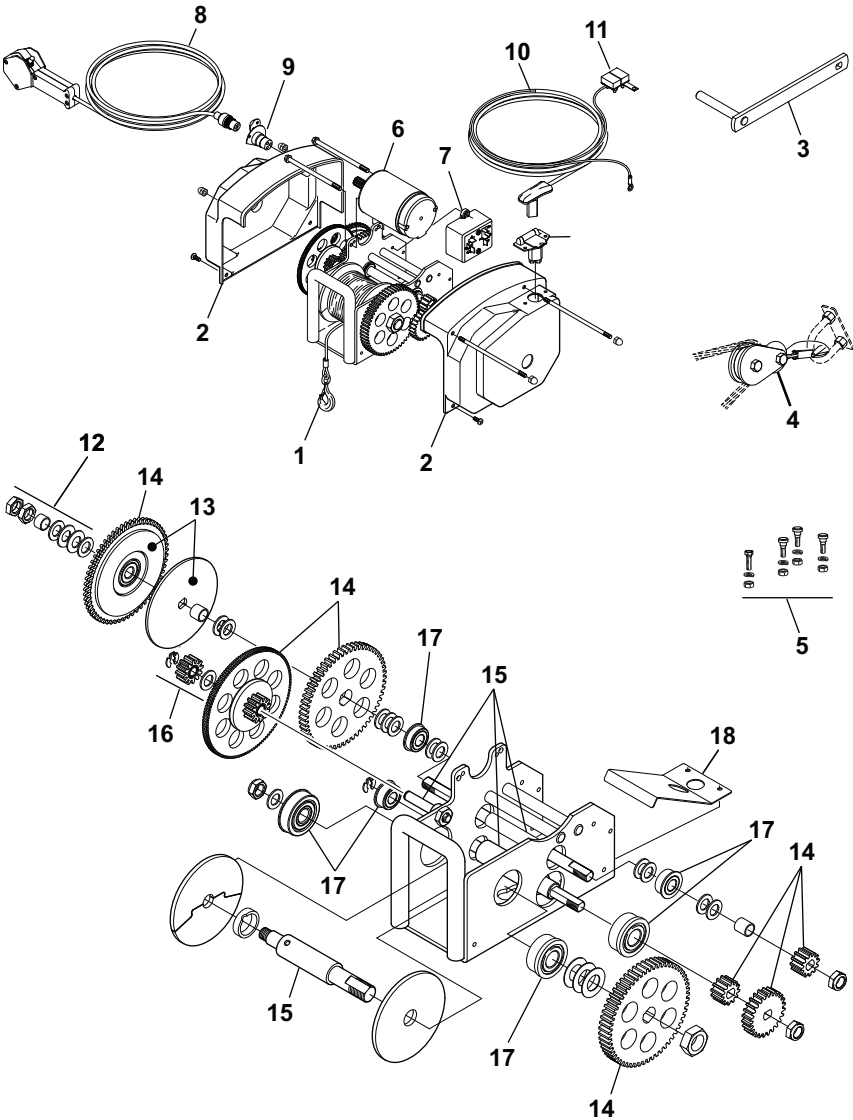


## TROUBLESHOOTING GUIDE

WINCH DOES NOT OPERATE			
A.	Confirm power to winch 1. Check vehicle battery is fully charged 2. Confirm connections are for tight & clean. 3. Check wires are worn or bare that may cause shorts		Correct as required.
B.	Check circuit breaker at battery Bypass circuit breaker and test winch. Does the winch run?	YES	If winch runs, circuit breaker is bad, replace.
	<b>NOTICE</b> Do not operate the winch without the circuit breaker. Removing the CB from the circuit is ONLY for testing.	NO	Reconnect circuit breaker. Contact your authorized service center.
LOAD SLIPS			
The winch is equipped with a friction brake that hold the load when the power is off. The brake requires adjustment if the load creeps while the power is off or if the brake slips while powering the load in or out.			
A.	Load slips during retrieval	Thrust washers and thrust bearings are worn or deformed. Replace	
B.	Load slips back after boat is retrieved	Clutch bearing inside the 120 gear has failed. Replace gear assy	
C.	Check clutch lining	Clean as required. If clutch lining is worn or damaged, replace the 120 tooth gear assembly.	
	The clutch lining is located on the 120 tooth gear under the LH (clutch side) of the case. Ensure that the clutch is clean free of grease.		



REPLACEMENT PARTS LIST



pw915501

Item	Description	Description	Notes
1	P7188800AJ	Cable Assy, 7/32" x 40'	1
2	R001304	Cover Kit	
3	P5594700AJ	Emergency Hand Crank	
4	P7904300AJ	Pulley Block Kit	
5	P7700000AJ	Quick Mount Kit	
6	R001310	Motor Assy	1
7	R001487	Relay Module	
8	R001305	Remote Control Assy	
9	R001309	Socket Kit	
10	P7830201AJ	Power Harness	
11	P7837300AJ	Circuit Breaker, 60amp	
12	R001298	Clutch Washer Kit	
13	R001297	Clutch Pad Kit	
14	R001303	Gear Kit	
15	R001306	Shaft Kit	
16	R001299	Locking Gear Kit	1
17	R001289	Bearing Kit	
18	R001288	Level Wind Kit	
19	R001486	Fastener Kit	2

- Notes:**
1. Fasteners are included with kit.
  2. Fasteners and washers not indexed on illustration are part of the fastener kit (item 19).