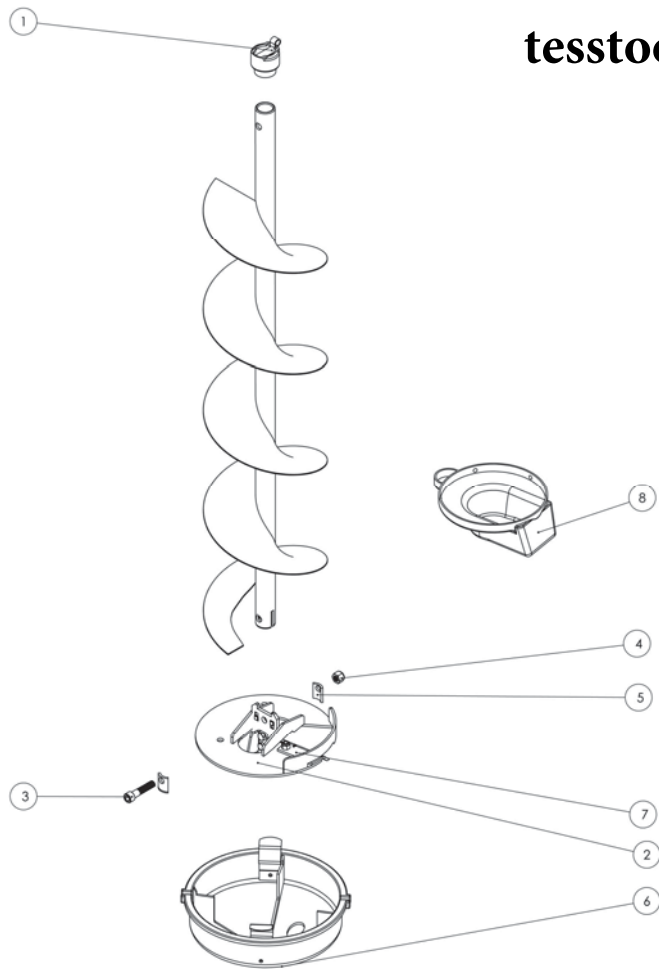


Use this part list if you have a short rubber hose connecting the regulator to the carburetor ONLY.

REF. #	PART #	DESCRIPTION	#USED	REF. #	PART #	DESCRIPTION	#USED
1	4327	Ignition Coil	1	24	4180	Mitten Grip Recoil Handle	1
2	4323	On-Off Switch	1	25	4474	Engine Hardware Kit (M5 Lock Washer)	6
3	4290	Spark Plug	1	26	4474	Engine Hardware Kit (M5 x 16 Capscrew)	5
4	4308	Muffler Gasket	1	27	4474	Engine Hardware Kit (M5 Flat Washer)	6
5	4306	Muffler	1	28	4474	Engine Hardware Kit (M5 x 40 Capscrew)	1
6	4307	Muffler Cover	1	29	4474	Engine Hardware Kit (M5 60 Hex Capscrew)	2
7	4369	Carburetor Adaptor Kit	1	30	4474	Engine Hardware Kit (M6 x 18 Sockethead Capscrew)	4
8	4048	Throttle Control Assembly (lever and cable)	1	31	4263	Carburetor	1
9	4349	Oil Fill Tube	1	33	4305	Recoil Starter Cup	1
10	4345	Oil-Fill Dipstick with O-Ring	1	34	4524	Valve Cover Gasket	1
11	3973	Engine Adaptor	1	35	4474	Engine Hardware Kit	
12	4511	Breather Tube	1	36	1002	Carburetor & Air Cleaner Gasket Kit	1
13	4474	Engine Hardware Kit (M5 x 75 Capscrew)	1	37	4542	Valve Cover	1
14	4535	Air Cleaner Retention Clip	1	38	4585	Propane Hose	1
15	4338	Foam Air Filter Element	1	39	4550	Propane Regulator	1
16	4339	Inside Air Cleaner Cover	1				
17	4337	Outside Air Cleaner Cover	1				
18	4474	Engine Hardware Kit (M5 Flange Nut)	5				
19	4539	Engine Cover Mounting Hardware Kit	1				
20	4539	Engine Cover Mounting Hardware Kit	1				
21	4539	Engine Cover Mounting Hardware Kit	1				
22	4322	Yellow Engine Shroud	1				
23	4304	Recoil Assembly	1				

800 397 7553

STX PRO™ DRILL ASSEMBLY PARTS LIST



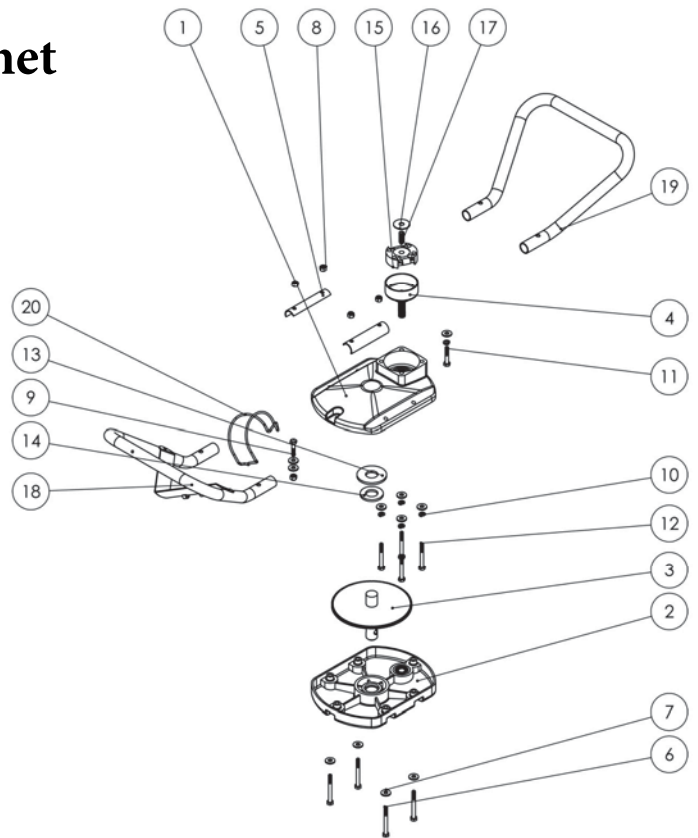
tesstools.net

REF. #	PART #	DESCRIPTION	#USED
1	3996	EZ Connect™ Collar with Pin	1
2	3751	6" STX PRO™ Head Kit	1
"	3752	8" STX PRO™ Head Kit	1
"	3753	9" STX PRO™ Head Kit	1
"	3754	10" STX PRO™ Head Kit	1
3	2259	Hex Capscrew 3/8"-16 x 1 3/4"	1
4	1938	Locknut, 3/8-16 x 1 3/4"	1
5	3503	D-Icer Head Support Clip	2
6	2120	8" Easy Snap™ Blade Protector	1
"	2121	9" Easy Snap™ Blade Protector	1
"	2205	10" Easy Snap™ Blade Protector	1
7	3586-STX	6" STX Blade Kit	1
"	3588-STX	8" STX Blade Kit	1
"	3589-STX	9" STX Blade Kit	1
"	3590-STX	10" STX Blade Kit	1
8	3301	6" Blade Protector	1

COMPLETE REPLACEMENT DRILL ASSEMBLY

3730-STX	6" STX PRO Drill
3731-PRO	8" STX PRO Drill
3732-PRO	9" STX PRO Drill
3733-PRO	10" STX PRO Drill

TRANSMISSION PARTS LIST



REF. #	PART #	DESCRIPTION	#USED
1	3720	Upper Gear Case Assembly	1
2	3721	Lower Gear Case Assembly	1
3	3707	Main Gear & Shaft Assembly	1
4	3681	Clutch Drum & Pinion Assembly	1
5	3722	Handle Plate	2
6	3351	Hex Capscrew 1/4-20 x 2 1/2	4
7	1689	Flat Washer 1/4"	11
8	2336	Locknut 1/4-20	7
9	3228	Hex Capscrew 1/4-20 x 1 1/4	1
10	1119	Lock Washer 1/4"	5
11	1683	Hex Capscrew 1/4-20 x 1 1/2	1
12	1996	Hex Capscrew 1/4-20 x 2 1/4	4
13	3634	Teflon® Washer 7/8"	1
14	1670	Flat Washer 7/8"	1
15	2383	Clutch Driver	1
16	2768	Clutch Washer	1
17	4049	Set Screw 3/4-24 x 1	1
18	4426	Cushion Handle & Cradle Assy. (Throttle Side)	1
19	4424	Cushion Wing Handle	1
20	2627	Propane Tank Spring Clamp	1

Use this part list if you have a short rubber hose connecting the regulator to the carburetor ONLY.